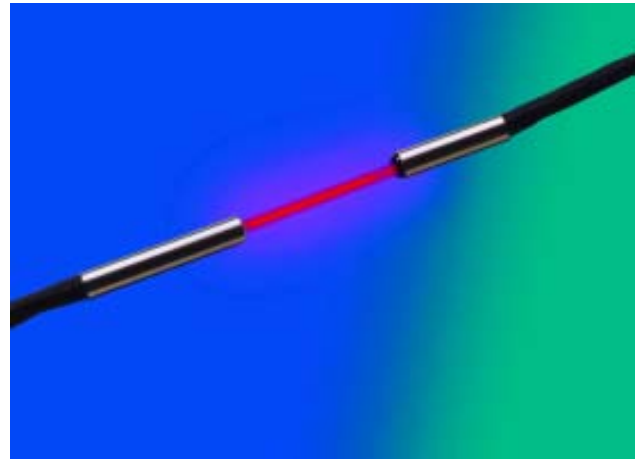


DL20R/S70

MICRO-THROUGH BEAM SENSOR
with separate amplifier

- extreme small beam spot Ø 0,4 mm
- very good resolution without additional lining or refractor
- high repeat accuracy
- high power optics within the sensor housing (highest resolution without additional lensing or apertures)
- non-fiber, highly flexible
- no minimum bending radius



- emitter Ø 2 mm x 12 mm
- receiver Ø 2 mm x 8 mm
- stainless steel



GENERAL TECHNICAL DATA

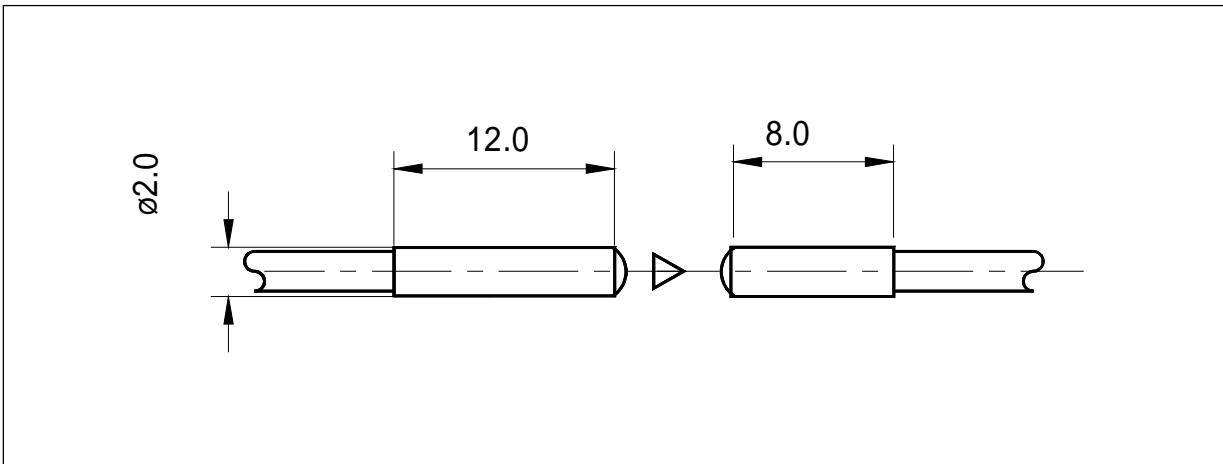
light type	Red 660nm
connection type	PUR-cable with connector
temperature range	-10°C to +55°C
protection class	IP65

SENSING DISTANCE and SMALLEST OBJECT

sensing distance	100mm
smallest object (Ø copper wire)*	Ø 0,05mm

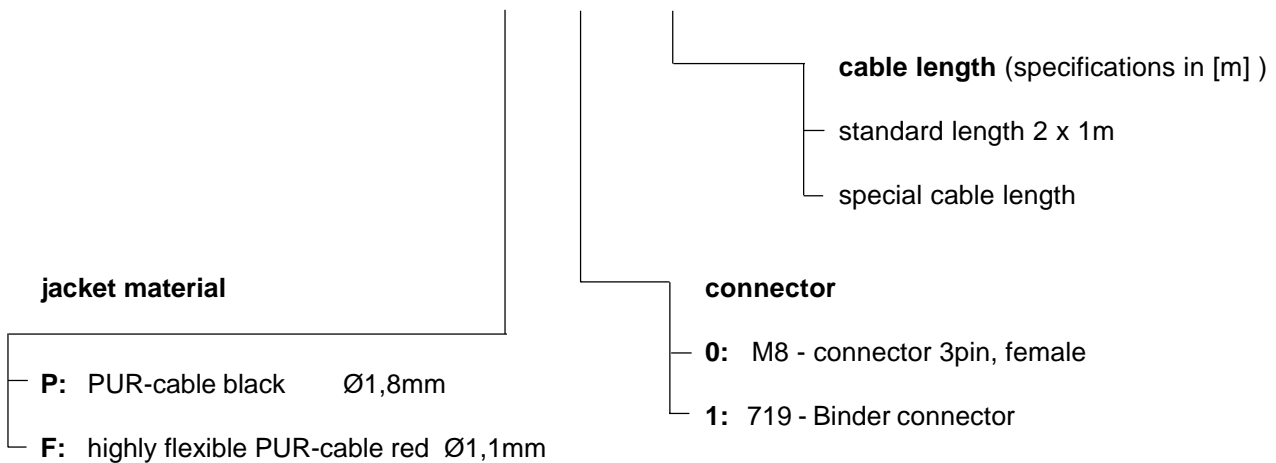
*copper wire, obtained at optimum distance and sensitivity setting on the amplifier

DIMENSION



PART DESIGNATION

DL20R/S70 - - :



ORDER EXAMPLE:

DL20R/S70-P-0:1m = DL20 Red light / special design S70 - PUR-cable black - M8, 3pin female: cable length 2 x 1m

Please remember, for correct operation, a separate amplifier is required.