

## DL23RM • DLM33RM

Micro Through Beam Sensor

- ↳ microSPOT LED-Technology  
brilliant light spot, reduced straylight
- ↳ less than 4° beam angle
- ↳ high lateral resolution  
for precise edge detection
- ↳ homogenous lightspot
- ↳ glass covered optics  
protect against abrasion or chemically  
aggressive fluids



**micro SPOT®**  
MICRO SPOT is a new and powerful LED technology for miniaturized opto sensors

DL23RM • DLM33RM


### TECHNICAL SENSOR DATA


light type	red 645nm
connection type	2 x 1m PUR cable with connector
temperature range	-10°C...+55°C
protection class	IP67

### TECHNICAL DATA

sensing range	500mm
smallest object*	Ø 0,05mm

\*blank copper wire

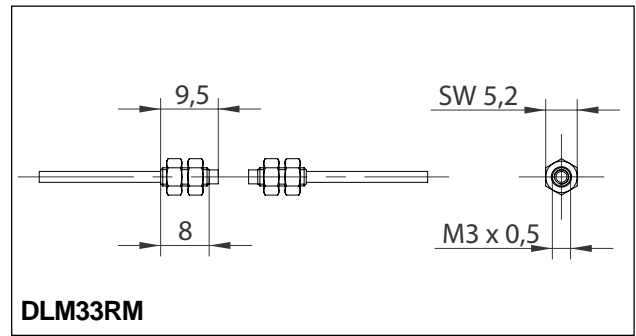
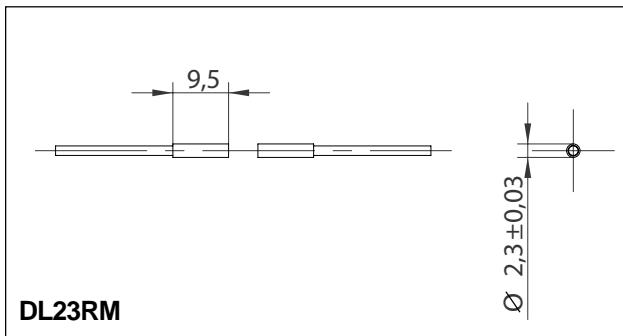
<ul style="list-style-type: none"> <li>• Ø 2,3mm x 9,5mm</li> <li>• stainless steel</li> </ul>	<p><b>DL23RM</b></p>  <p>actual size</p>
--	---

<ul style="list-style-type: none"> <li>• M3 x 9,5mm</li> <li>• stainless steel</li> </ul>	<p><b>DLM33RM</b></p>  <p>actual size</p>
---	--



beam spot at 100mm distance

**DIMENSIONS**



**PART DESIGNATION**

**DL23RM** -  -  :

**DLM33RM** -  -  :

**jacket material**

- P:** PUR-cable black Ø 1,8mm
- F:** highly flexible PUR-cable red Ø 1,1mm

**cable length** (specifications in [m] )

- standard length 1m
- special cable length

**connector**

- 0:** M8 - connector 3pin, female
- 1:** 719 - connector  
(see page *Options and Accessories*)

**ORDER EXAMPLE:**

**DL23RM-P-0:1m** = DL23RM red light - PUR-cable black - M8, 3pin female: (cable length 1m x 2)

**Please notice, for correct operation, a separate amplifier is required.**