

RLS34-45/2BP

OPTICAL FRAME SENSOR

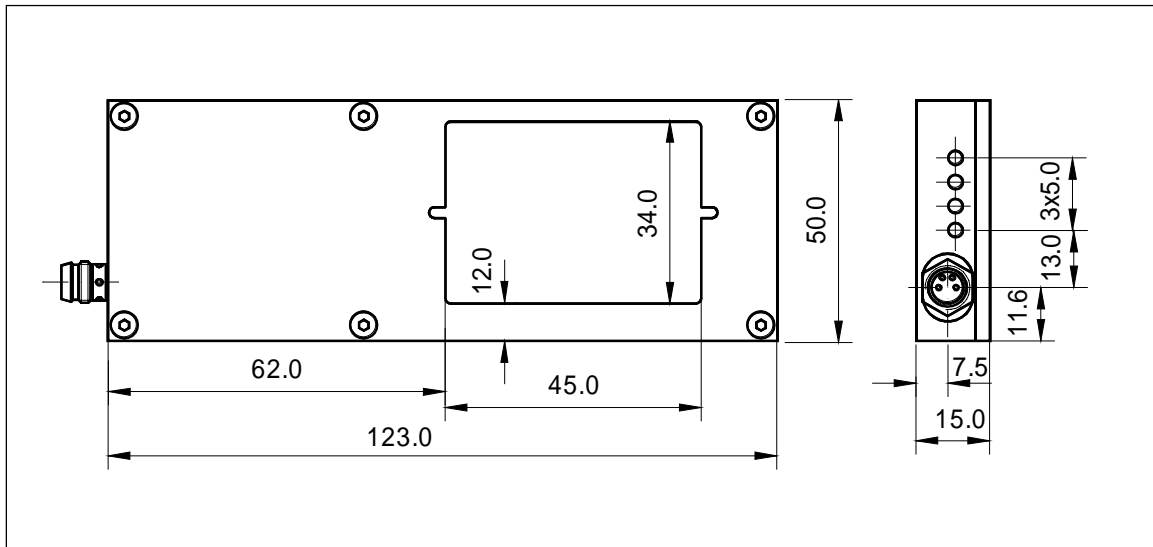
- automatic self adjustment
- 1 and 2 channel operation (automatic switching)
- high resolution
- high speed detection
- min. 1 ms pulse length



TECHNICAL DATA

Number of Channels	1 or 2, channel partition insert 2mm wide (partition is 1.9mm +/-0.15mm, sensor partition opening is 2.09mm +/- 0.15mm)	
Channel Mode Selection	Automatic	
Calibration Method	Automatic	
Supply	Voltage	24V ripple < 10% within specified limits
	Current Consumption	50mA - normal 150mA - maximum
Setup Time	Time from Power Application	1 s
Response Time	t _{on} to t _{off}	150µs
Temperature	Operating	0°C to 60°C
	Storage	-10°C to 60°C
Outputs	Maximum Output Current	PNP, 100mA/Channel
	Residual Voltage at 100mA	< 2V
	Residual 10mA	< 1.5V
	Pulse Stretching	1 ms permanent (only pulses shorter than 1ms are extended)
Switching Function	Dark-on	
Spectral Output	Wavelength-Peak	IR 880nm
Electrical Protection	Output	Short Circuit Proof
	Input	Reversed Polarity Protection
Electronics Shock Prot.	Electronics completely potted	
Objects to be detected	speed	2000 parts per minute
	size	Ø 2mm in Single- and Ø 1mm in Dual Channel Mode
Protection Class	IP65	
Housing	Material	Clear anodized Aluminium
	Outside Dimensions (l x w x t)	
	Dimensions „Window“ (l x w)	45mm x 34mm
	Sensor Dividing Plate (optional)	
Supply Connection	4pin Pico M8 connector	

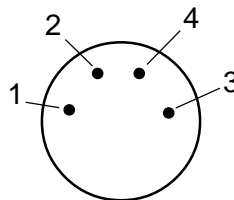
DIMENSIONS



CONNECTION DIAGRAM

connector M8 4-pin

1 (brown)	+ VDC
2 (white)	out 2
3 (blue)	- GND
4 (black)	out 1



PART DESIGNATION

RLS34-45/2BP