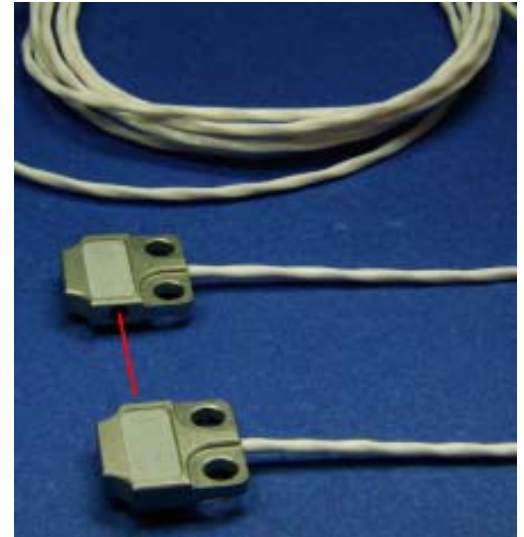


DLF32RM-T-99

MINI-THROUGH BEAM SENSOR
with separate amplifier

- ↳ latest LED technology
- ↳ extra narrow beam angle (small light spot)
- ↳ very high resolution and repeatability
- ↳ space saving and robust design
- ↳ optimized for high vacuum applications
- ↳ teflon sheathed cable




micro SPOT[®]
micro SPOT is a new and powerful LED technology for miniaturized opto sensors

DLF32RM-T-99

TECHNICAL SENSOR DATA

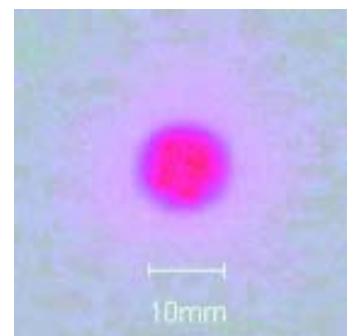
light type	red 645nm
connection type	2 x 1m PUR-cable
temperature range	-10°C...+55°C
protection class	IP67

<ul style="list-style-type: none"> • 13,5mm x 13mm x 3mm • aluminium, anodized • screw on mounting 	<p>DLF32RM-T-99</p>  <p>Actual size</p>
---	---

SENSING RANGE and SMALLEST OBJECT

nominal sensing range	500 mm
smallest object*	Ø 0,05 mm

*copper wire, obtained with optimal distance and sensitivity setting on the amplifier.



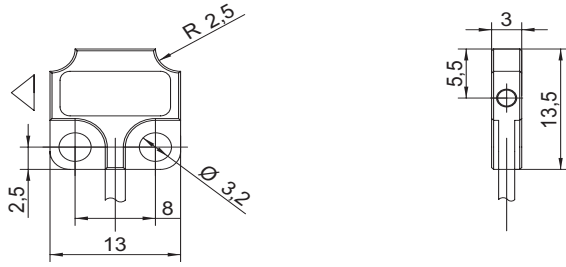
beam spot at 100mm distance

This sensor is designed for high vacuum applications. All materials have been selected in terms of outgassing characteristics:

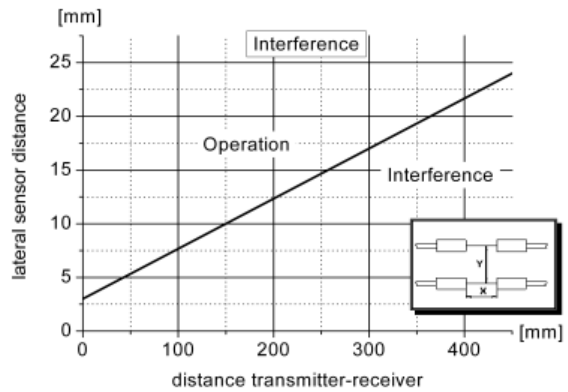
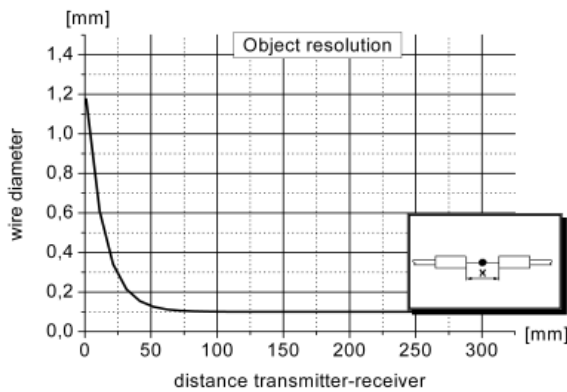
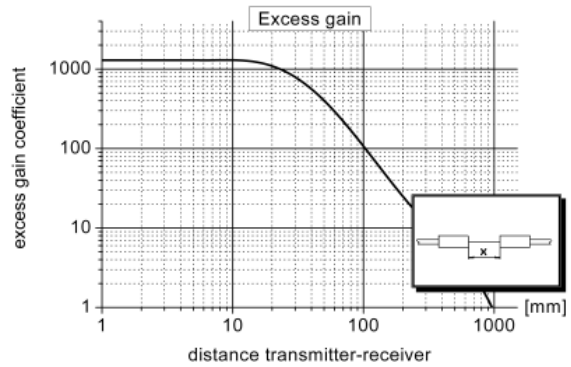
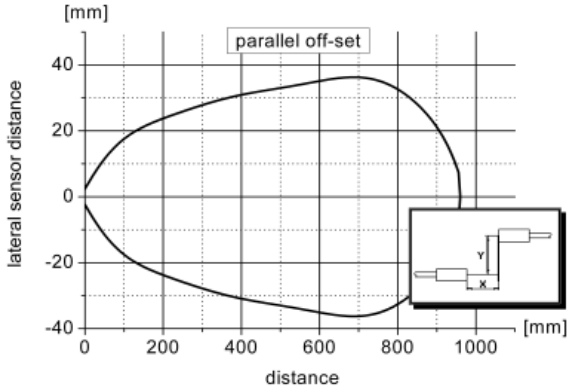
- Aluminum AlMgSi1, anodized
- Borosilicate glass, SCHOTT D 236 T
- Teflon (PFA) sheathed cable, type STC
- Epoxies NASA approved for space flight application*

*Detailed characteristics can be provided upon request.

DIMENSIONS



GRAPHS (deviation, resolution and interference obtained with V9 on max. sensitivity adjustment)



WIRING

emitter:	red:	LED ⁺
	white:	LED ⁻
receiver:	green:	FT ⁺
	black:	FT ⁻

PART DESIGNATION

DLF32RM-T-99:1,5m

Please remember, for correct operation, a separate amplifier is required.