

V8

SWITCHING AMPLIFIER WITH TEACH-IN

- ⊃ fully compatible with all STM sensors to be operated with a separat amplifier
- ⊃ Auto-Teach and manual adjustment
- ⊃ input for Self-Teach
- ⊃ pulse stretching (5 values selectable)
- ⊃ alarm output
- ⊃ Light On / Dark On, selectable
- ⊃ PNP or NPN



GENERAL TECHNICAL DATA

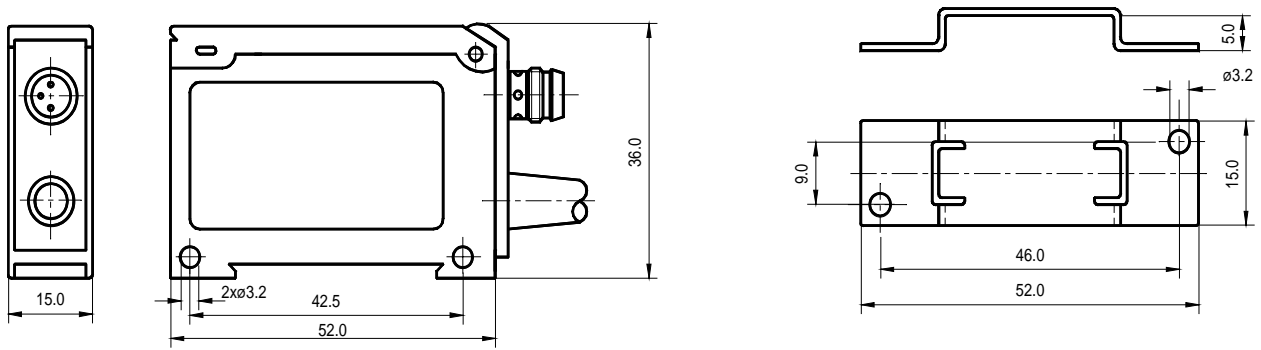
	V8-AP	V8-AN	V8-BP	V8-BN	V8-FP	V8-FN	V8-YP	V8-YN
switching logic	PNP	NPN	PNP	NPN	PNP	NPN	PNP	NPN
functional principle	non pulsed**		pulsed					
frequency response	5kHz		500Hz		3kHz		500Hz	
max. response time	180µs		1,1ms		270µs		1,1ms	
current consumption (average / peak)	50mA / 50mA		45mA / 180mA		45mA / 90mA		35mA / 110mA	
max. sensing distance / range*	33%		100%		33%		75%	
power supply indicator / signal stability	LED green							
output status indicator / signal strength	3 x LED yellow							
pulse stretching	0, 10ms, 20ms, 50ms, 100ms, 200ms (selectable)							
operating voltage	10 to 30 VDC (max.), reversed polarity							
output current	100 mA, short-circuit proof, reversed polarity							
weight	55 g							
housing	ABS							
operating temperature	10°C to +55°C							
protection class	IP 65							
power supply cable(standard)	2 m PVC-cable 5 x 0,14 mm ²							
optional with plug in supply***	M12, 5 pins or M8, 4 pins (v. reverse)							

*percentage of max. sensor rating (see individual sensor datasheet)

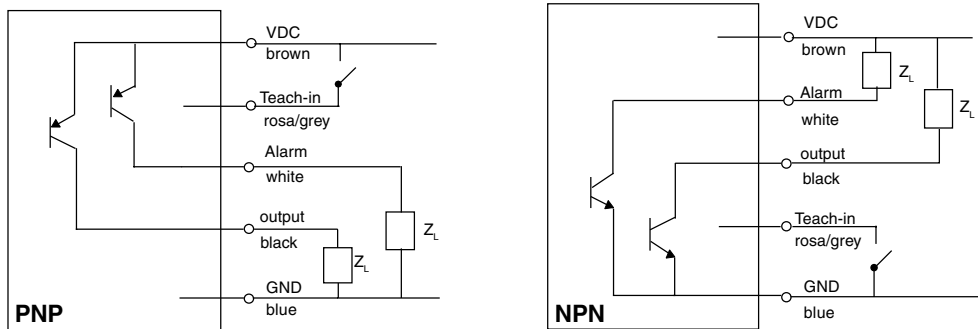
**may be influenced by ambient light

***cable to be ordered seperately

DIMENSIONS



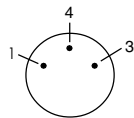
CONNECTION-DIAGRAM



Sensor

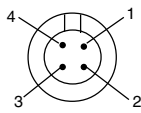
Standard -00:

connector M8, 3 pins
 1 + emitter
 4 GND/shielding
 3 + receiver



Option -10/-11:

socket, 4 pins
 1 + emitter
 2 GND/shielding
 3 GND/shielding
 4 + receiver



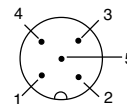
In-/Output

Standard -00
 Option -10:

PVC-cable, 5 wires, 2m
 brown + VDC
 white Alarm output
 blue - GND
 black Signal output
 gray Teach-in

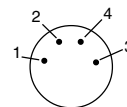
Options -01/-11:

connector M12 5pins
 1 (brown) + VDC
 2 (white) Alarm output
 3 (blue) - GND
 4 (black) Signal output
 5 (gray) Teach-in



Option -02:

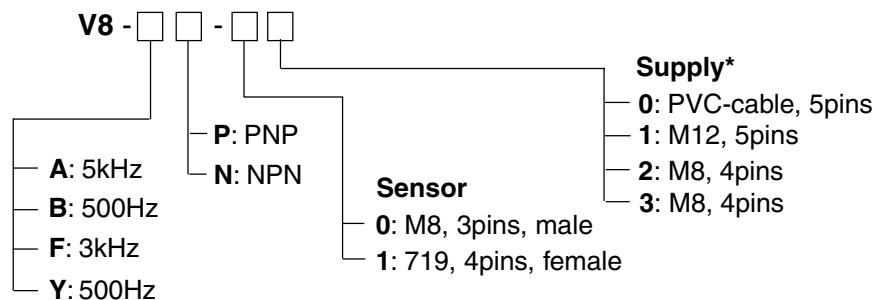
connector M8 4pins
 1 (brown) + VDC
 2 (white) Alarm output
 3 (blue) - GND
 4 (black) Signal output



Option -03:

connector M8 4pins
 1 (brown) + VDC
 2 (white) Teach-in
 3 (blue) - GND
 4 (black) Signal output

PART DESIGNATION



*plug in supply cable to be ordered separately

ORDER EXAMPLE

V8-FP-02 = 3kHz / PNP / Sensor M8, 3pins / M8 4pins