

## RXLM122R-BDP • RXLM126R-BDP

RETRO REFLECTIVE SENSOR  
with integrated amplifier

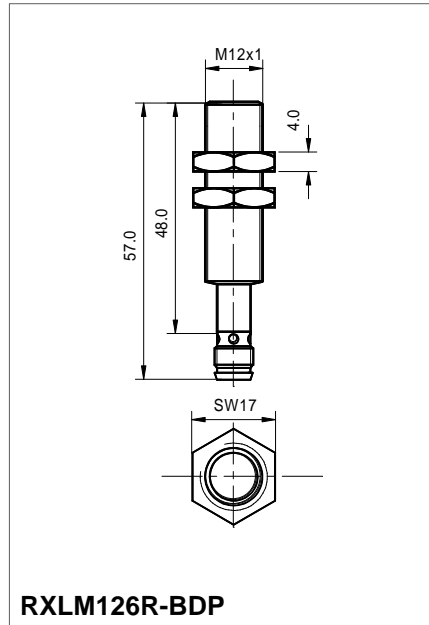
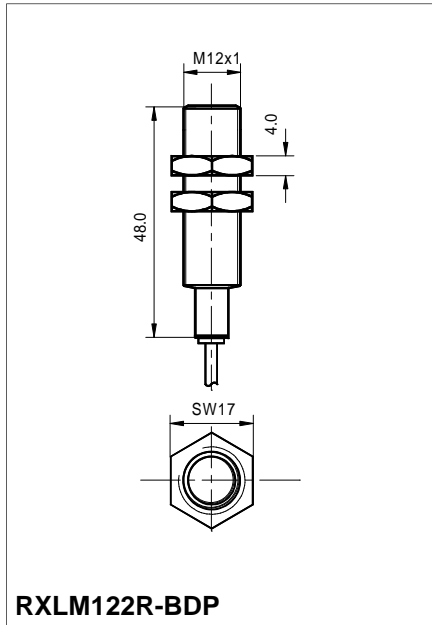
- ◉ no additional amplifier required
- ◉ compact design
- ◉ stainless steel housing
- ◉ long range



	RXLM122R-BDP	RXLM126R-BDP
Light type	red 645nm	
Functional principle	pulsed	
max. frequency response	500Hz	
Function indicator	LED red	
Switching function	dark-on	
Operating voltage	10...30VDC reversed polarity protection	
Current consumption	30mA	
Output current	PNP 100mA short-circuit proof	
Sensing distance*	600mm	
Hysteresis	<15%	
Response time	<1,5ms	
Temperature range	-10°C to +55°C	
Housing material	stainless steel	
Weight	35g	20g
Protection class	IP65	
Supply connection	2m PUR-cable 3 x 0,09	Connector M8, 3pins
Adjustment indicator	LED blinking 2Hz	LED blinking 2Hz
Short circuit indication	LED blinking 8Hz	LED blinking 8Hz

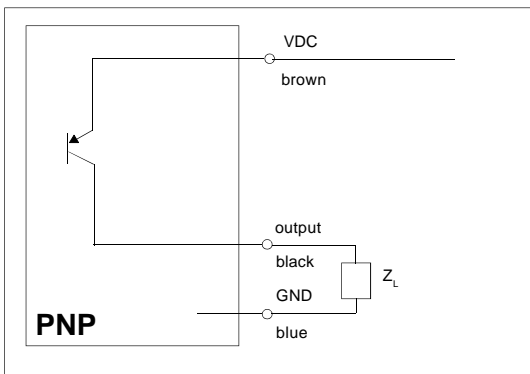
\*on the enclosed reflector

**DIMENSIONS**



**CONNECTION-DIAGRAM**

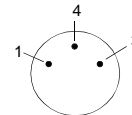
**SUPPLY AND OUTPUT**



**RXLM122R-BDP**

- brown + VDC
- blue - GND
- black signal output

**RXLM126R-BDP**



- 1 (brown) VDC
- 4 (black) output
- 3 (blue) GND

(supply cable to be ordered separately)

**ORDER EXAMPLE**

<b>RXLM122R-BDP:</b>	pulsed	dark-on	PNP-output
<b>RXLM126R-BDP:</b>	pulsed	dark-on	PNP-output