

DLM82-BDP • DLM86-BDP

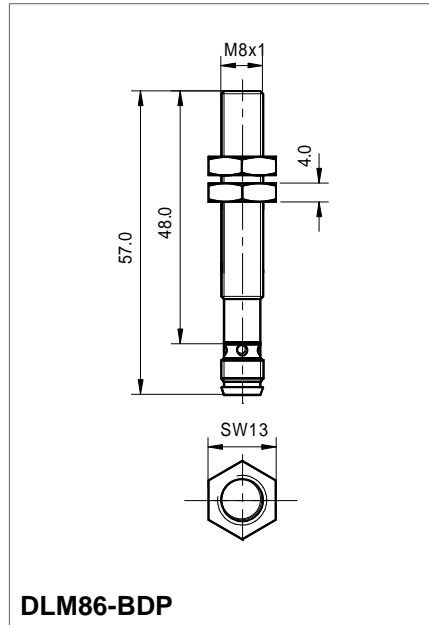
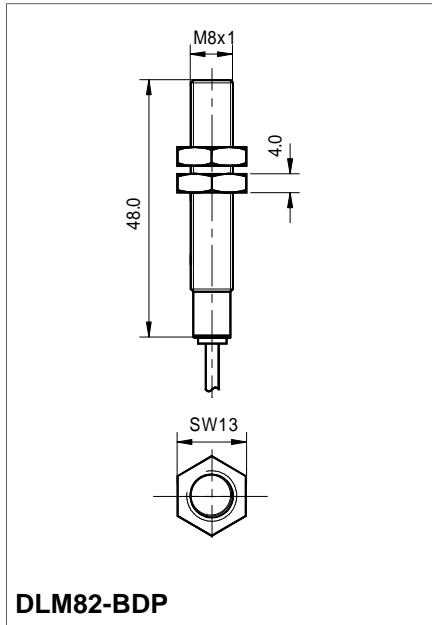
THROUGH BEAM SENSOR
with integrated amplifier

- ◉ no additional amplifier required
- ◉ compact design
- ◉ stainless steel housing
- ◉ long range



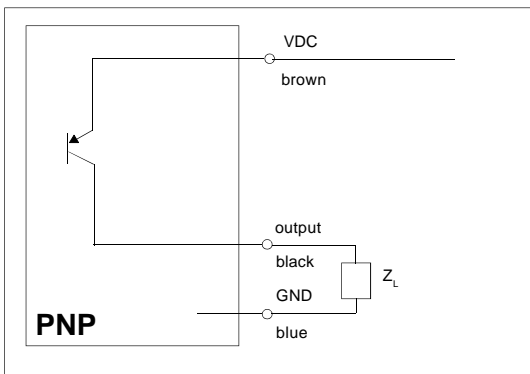
	DLM82-BDP	DLM86-BDP
Light type	infrared	
Functional principle	pulsed	
Max. frequency response	400Hz	
Function indicator	LED orange	
Switching function	dark-on	
Operating voltage	10...30VDC, reversed polarity protection	
Current Consumption	50mA	
Output current	PNP 100mA short circuit proof	
Sensing distance	3m	
Hysteresis	<15%	
Response time	<1,5ms	
Temperature range	-10°C to +55°C	
Housing material	stainless steel	
Weight	50g	20g
Protection class	IP65	
Supply connection	2m PUR-cable 3 x 0,09	Connector M8, 3pins
Adjustment indicator	LED blinking 2Hz	LED blinking 2Hz
Short circuit indication	LED blinking 8Hz	LED blinking 8Hz

DIMENSIONS



CONNECTION-DIAGRAM

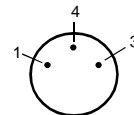
SUPPLY AND OUTPUT



DLM82-BDP

- brown + VDC
- blue - GND
- black signal output

DLM86-BDP



- 1 (brown) VDC
- 4 (black) signal output
- 3 (blue) GND

(supply cable to be ordered separately)

ORDER EXAMPLE

DLM82-BDP:	pulsed	dark-on	PNP-output
DLM86-BDP:	pulsed	dark-on	PNP-output