

RLM82-BHP • RLM86-BHP

DIFFUSE REFLECTIVE SENSOR
with integrated amplifier

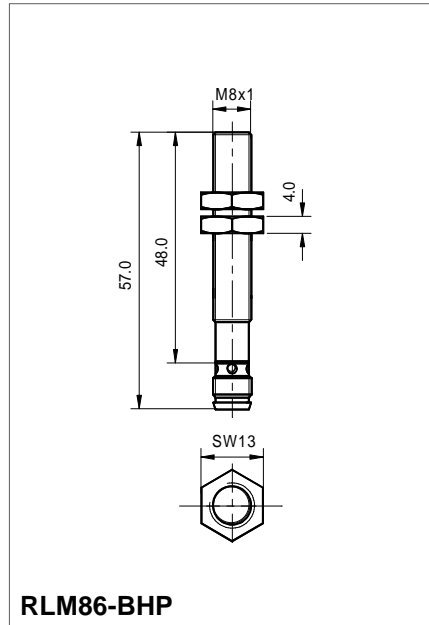
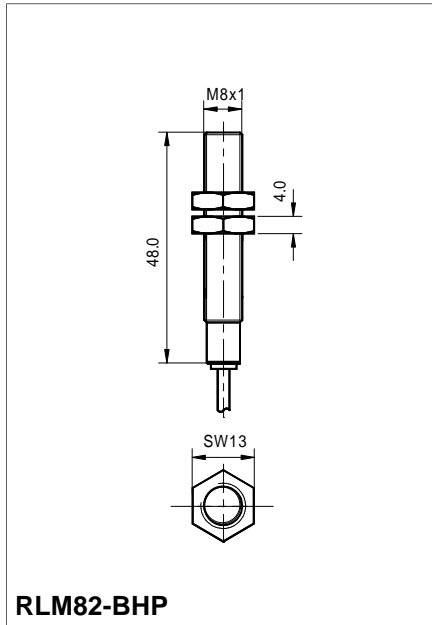
- ◉ no additional amplifier required
- ◉ compact design
- ◉ stainless steel housing
- ◉ long range



	RLM82-BHP	RLM86-BHP
Light type	infrared	
Functional principle	pulsed	
Max. frequency response	500Hz	
Function indicator	LED red	
Switching function	light-on	
Operating voltage	10...30VDC, reversed polarity protection	
Current consumption	30mA	
Output current	PNP 100mA, short circuit proof	
Switching distance*	5mm...80mm	
Hysteresis	<15%	
Response time	<1,5ms	
Temperature range	-10°C to +55°C	
Housing material	stainless steel	
Weight	25g	10g
Protection class	IP65	
Supply connection	2m PUR-cable 3 x 0,09	Connector M8, 3pins
Adjustment indicator	LED blinking 2Hz	LED blinking 2Hz
Short circuit indication	LED blinking 8Hz	LED blinking 8Hz

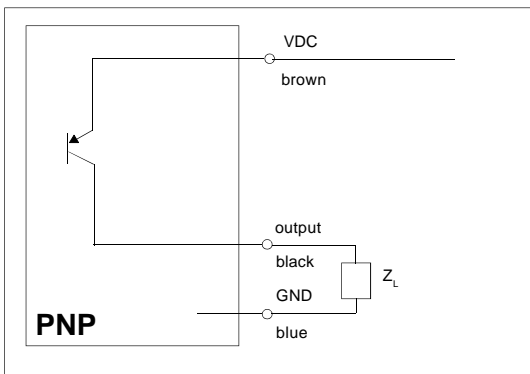
*on white Photopaper 50mm x 50mm

DIMENSIONS



CONNECTION-DIAGRAM

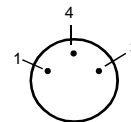
SUPPLY AND OUTPUT



RLM82-BHP

- brown + VDC
- blue - GND
- black signal output

RLM86-BHP



- 1 (brown) VDC
- 4 (black) signal output
- 3 (blue) GND

(supply cable to be ordered separately)

ORDER EXAMPLE

RLM82-BHP:	pulsed	light-on	PNP-output
RLM86-BHP:	pulsed	light-on	PNP-output