

## RLV918R

MINI REFLECTIVE BEAM SENSOR  
with separate amplifier

- ◉ long range
- ◉ narrow beam angle
- ◉ very good resolution
- ◉ for long distance application
- ◉ robust housing



RLV918R

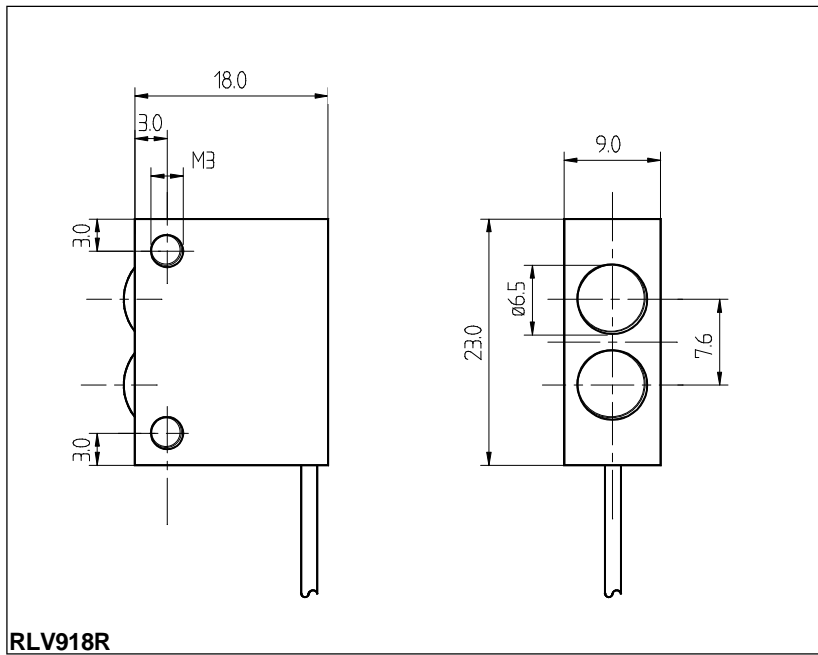
### GENERAL TECHNICAL DATA

light type	Red 660 nm
connection type	PUR-cable with M8 plug
temperature range	-10°C...+55°C
protection class	IP65
housing material	nickel-plated brass
lens surface	glass

### SENSING DISTANCE

sensing distance	5 m on reflector
------------------	------------------

## DIMENSIONS



## PART DESIGNATION

**RLV918R** -  -  :

**jacket material**

**P:** PUR-cable black

**F:** highly flexible PUR-cable red

**cable length** (specifications in meters)  
standard 1m

**connector**

**0:** M8 - connector 3 pin, female

**1:** 719 - Binder connector  
(see page *Options and Accessories*)

## ORDER EXAMPLE:

**RLV918R-P-0:1m** = RLV918R, PUR-cable black-M8, 3 pin female: cable length 1m

**Please remember, for correct operation, a separate amplifier is required.**