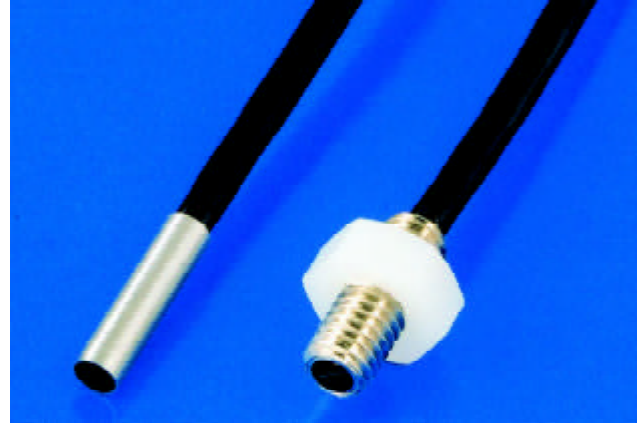


## RL20 • RLM30

MICRO REFLECTIVE BEAM SENSOR  
with separate amplifier

- ◉ the world's smallest non-fiber optic reflective beam sensor!
- ◉ smallest housings - minimum space required
- ◉ very small housing dimension
- ◉ highly flexible connector cable



<ul style="list-style-type: none"> <li>• Ø 2 mm x 8 mm</li> <li>• Stainless steel</li> <li>• f. gluing or clamping fixture</li> </ul>	<p><b>RL20</b></p> <p>Actual size</p>
<ul style="list-style-type: none"> <li>• M3 x 0,5 mm x 8 mm</li> <li>• Stainless steel</li> <li>• f. screw-in fixture</li> </ul>	<p><b>RLM30</b></p> <p>Actual size</p>

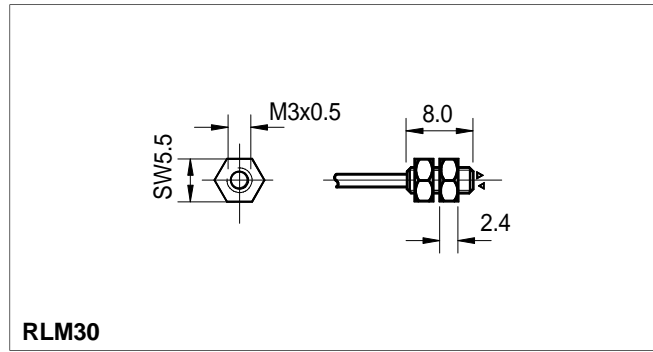
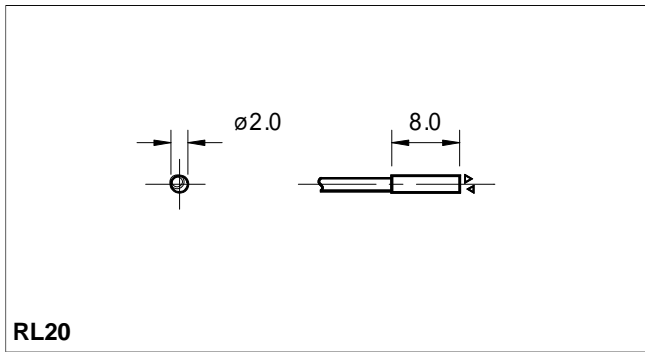
### GENERAL TECHNICAL DATA

light type	Red 660 nm or Infrared 880 nm
connection type	PUR-cable with connector
temperature range	-10°C to + 55°C
protection class	IP 65

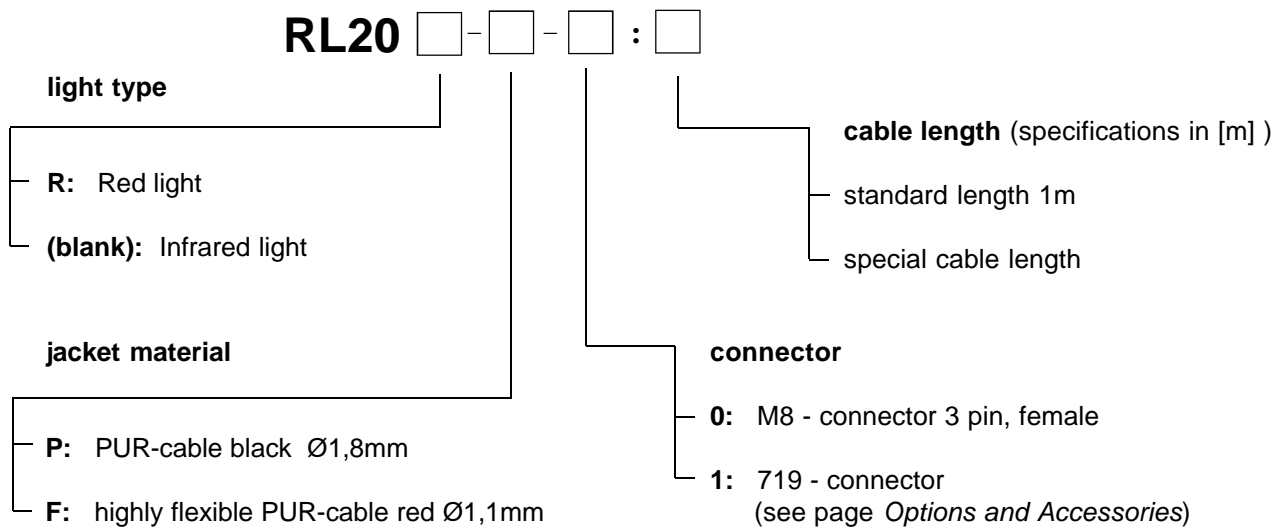
### SENSING DISTANCE

sensing distance (on white Kodak card)	12 mm
sensing distance (on reflector)	250 mm

**DIMENSIONS**



**PART DESIGNATION**



**ORDER EXAMPLE:**

RL20R-P-0:1m = RL20 Red light - PUR-cable black - M8, 3 pin female: (cable length 1m)

**Please remember, for correct operation, a separate amplifier is required.**