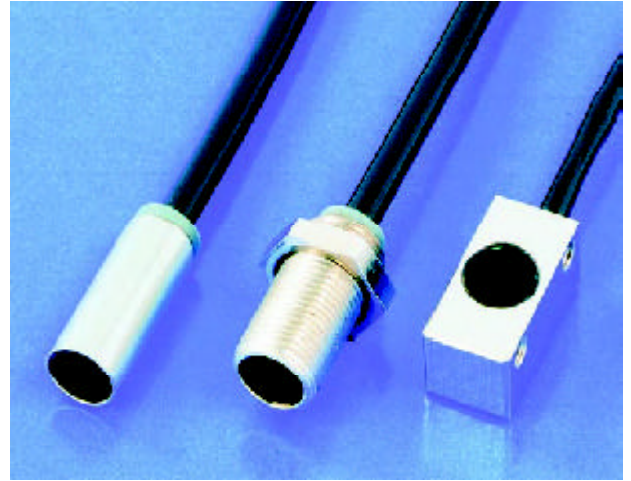


## RL50L • RLM60L • RLV60L

MINI REFLECTIVE BEAM SENSORS  
with separate amplifier

- ⤷ high performance optics
- ⤷ compact construction
- ⤷ long range
- ⤷ highly flexible connector cable



<ul style="list-style-type: none"> <li>• Ø 5mm x 13mm</li> <li>• Stainless steel</li> <li>• Infrared 880nm</li> </ul>	<p><b>RL50L</b></p>  <p>Actual size</p>
<ul style="list-style-type: none"> <li>• M6 x 0,5mm x 13mm</li> <li>• Nickel-plated brass</li> <li>• Infrared 880nm</li> </ul>	<p><b>RLM60L</b></p>  <p>Actual size</p>
<ul style="list-style-type: none"> <li>• 6mm x 6mm x 12mm</li> <li>• Nickel-plated brass</li> <li>• Infrared 880nm</li> </ul>	<p><b>RLV60L</b></p>  <p>Actual size</p>

### GENERAL TECHNICAL DATA

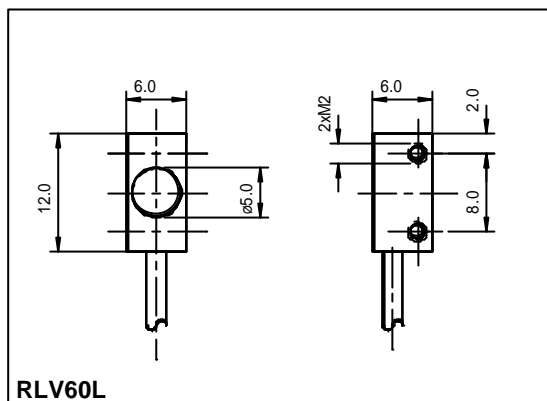
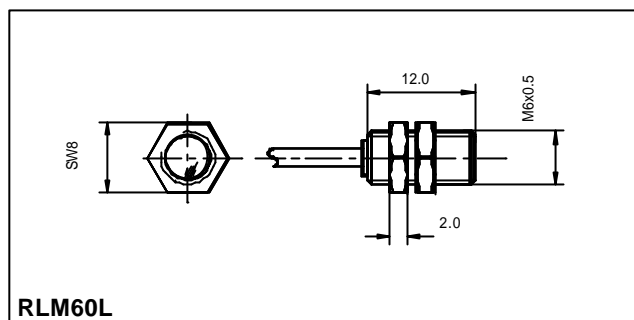
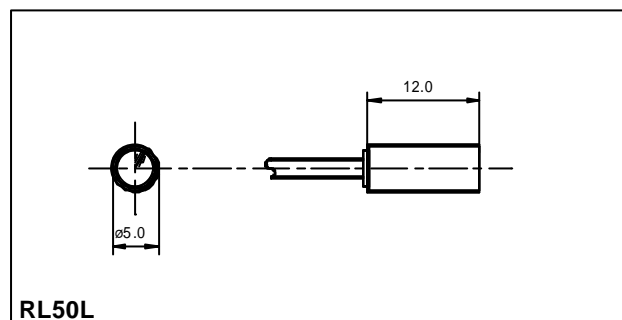
light type	Infrared 880nm
connection type	PUR-cable with connector
temperature range	-10°C to +55°C
protection class	IP65

### SENSING DISTANCE

sensing distance	100mm*
sensing distance (on reflector)	1200mm

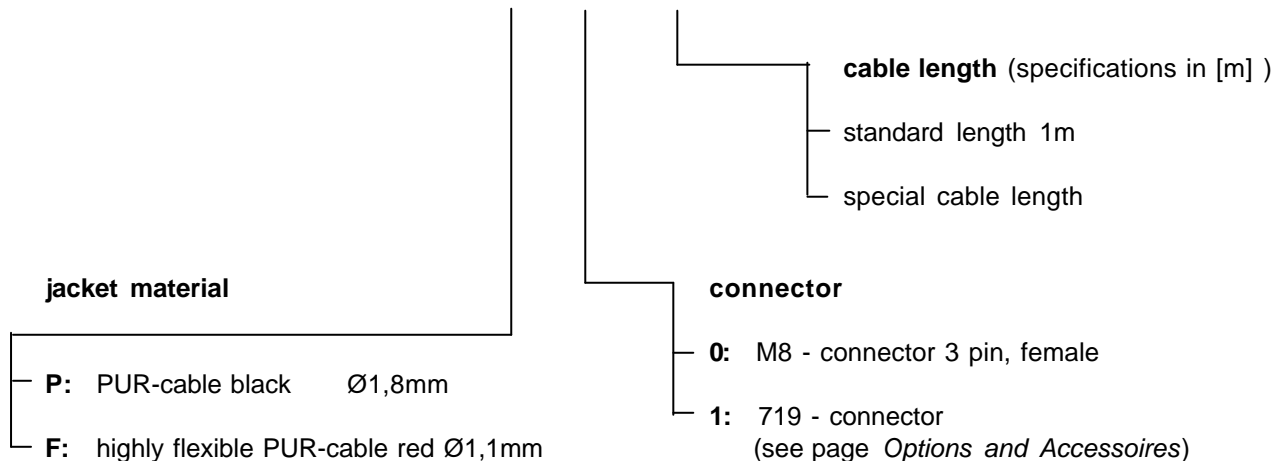
\*on white non glossy paper (90% remission, 100x100mm)

**DIMENSIONS**



**PART DESIGNATION**

**RL50L** -  -  :



**ORDER EXAMPLE:**

**RL50L-P-0:1m** = RL50L infrared - PUR-cable black - M8, 3 pin female: (cable length 1m)

**Please remember, for correct operation, a separate amplifier is required.**