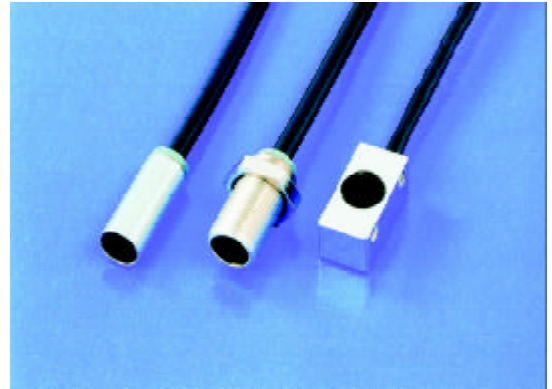


RL50RM • RLM60RM • RLV60RM

Mini Reflective Beam Sensor

- ▶ latest LED technology
- ▶ very high lateral resolution
- ▶ robust design
- ▶ minimum weight





micro SPOT[®]
micro SPOT is a new and powerful LED technology for miniaturized opto sensors.


RL50RM • RLM60RM • RLV60RM

TECHNICAL SENSOR DATA

light type	red 645nm
connection type	1m PUR-cable with connector
temperature	-10°C...+55°C
protection	IP65

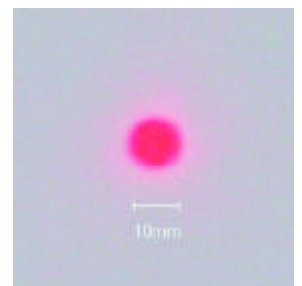
<ul style="list-style-type: none"> • Ø 5mm x 12mm • stainless steel 	RL50RM  <small>actual size</small>
---	--

<ul style="list-style-type: none"> • M6 x 12mm • nickel-plated brass 	RLM60RM  <small>actual size</small>
--	---

<ul style="list-style-type: none"> • 6mm x 6mm x 12mm • nickel-plated brass 	RLV60RM  <small>actual size</small>
---	---

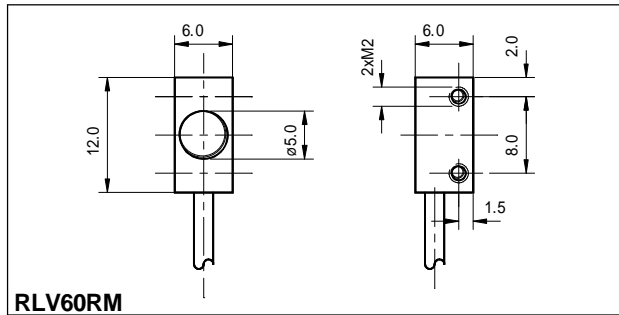
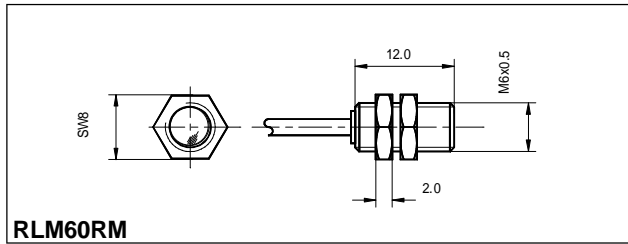
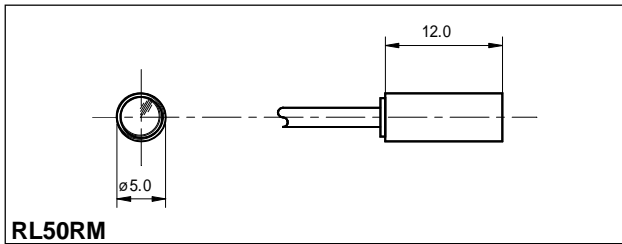
TECHNICAL DATA

sensing distance	60mm
sensing distance on reflector R35	800mm



beam spot at 100mm distance

DIMENSIONS



PART DESIGNATION

RL50RM - - :

jacket material

- P:** PUR-cable black Ø1,8mm
- F:** highly flexible PUR-cable red Ø1,1mm

connector

- 0:** M8 - connector 3pin, female
- 1:** 719 - connector (refer to Options)

cable length (specification in [m])

- standard length 1m
- special cable length

ORDER EXAMPLE:

RL50RM-P-0:1m = RL50RM red light - PUR-cable black - M8, 3pin female: (cable length 1m)

Please note, for correct operation, a separate amplifier is required.