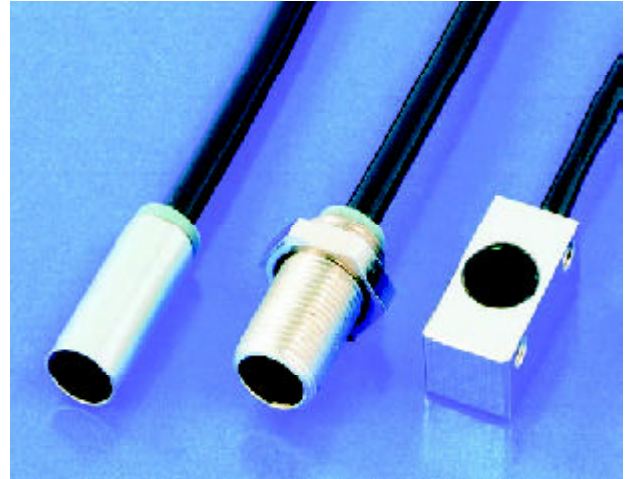





RL50 • RLM60 • RLV60

MINI REFLECTIVE BEAM SENSORS
with separate amplifier

- ▷ high performance optics
- ▷ compact construction
- ▷ long range
- ▷ highly flexible connector cable



<ul style="list-style-type: none"> • Ø 5 mm x 13 mm • Stainless steel • Infrared 880 nm 	<p>RL50</p>  <p>Actual size</p>
<ul style="list-style-type: none"> • M6 x 0,5 mm x 13 mm • Nickel-plated brass • Infrared 880 nm 	<p>RLM60</p>  <p>Actual size</p>
<ul style="list-style-type: none"> • 6 mm x 6 mm x 12 mm • Nickel-plated brass • Infrared 880 nm 	<p>RLV60</p>  <p>Actual size</p>

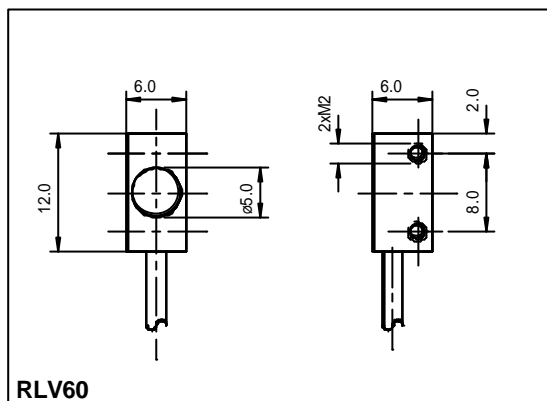
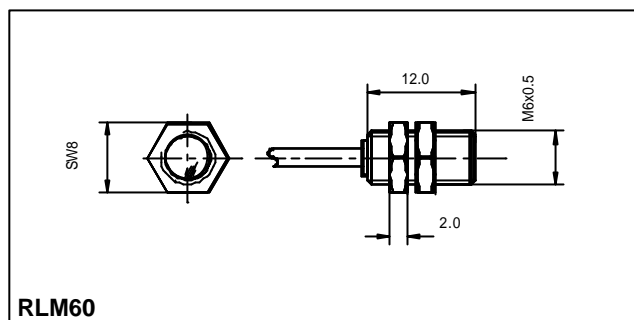
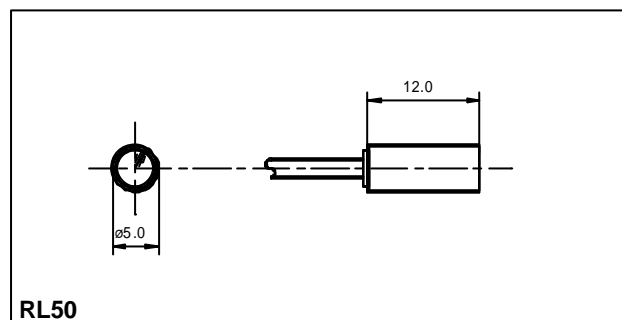
GENERAL TECHNICAL DATA

light type	Red 660 nm or Infrared 880nm
connection type	PUR-cable with connector
temperature range	-10°C to +55°C
protection class	IP 65

SENSING DISTANCE

sensing distance (on white Photographic paper)	60 mm
sensing distance (on reflector)	800 mm

DIMENSIONS



PART DESIGNATION

RL50 □ - □ - □ : □

light type

R: Red light

(blank): Infrared light

jacket material

P: PUR-cable black Ø1,8mm

F: highly flexible PUR-cable red Ø1,1mm

cable length (specifications in [m])

standard length 1m

special cable length

connector

0: M8 - connector 3 pin, female

1: 719 - connector
(see page *Options and Accessoires*)

ORDER EXAMPLE:

RL50R-P-0:1m = RL50 Red light - PUR-cable black - M8, 3 pin female: (cable length 1m)

Please remember, for correct operation, a separate amplifier is required.