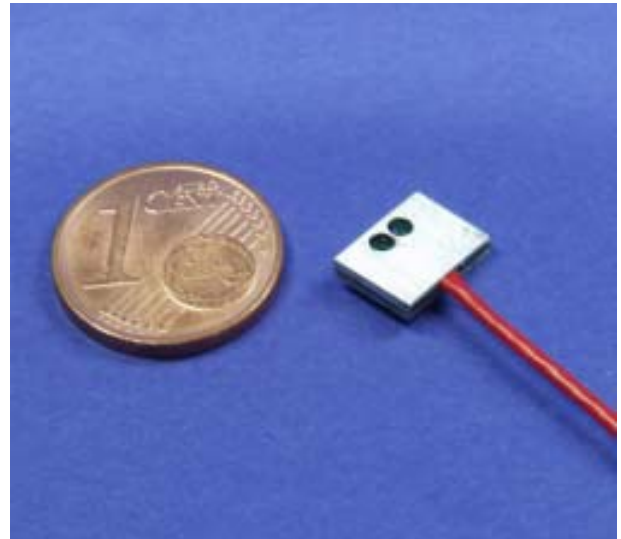



## RLF24-F-0:1m

MINI REFLECTIVE BEAM SENSOR  
with separate amplifier

- ➔ smallest sensor in the market
- ➔ for detection of two-dimensional objects
- ➔ minimum weight
- ➔ vacuum rated models available



RLF24-F-0:1m

<ul style="list-style-type: none"> <li>• superflat 1,7mm</li> <li>• aluminium housing</li> <li>• f. gluing or clamping fixture</li> </ul>	<p><b>RLF24</b></p>  <p>Actual size</p>
---	--

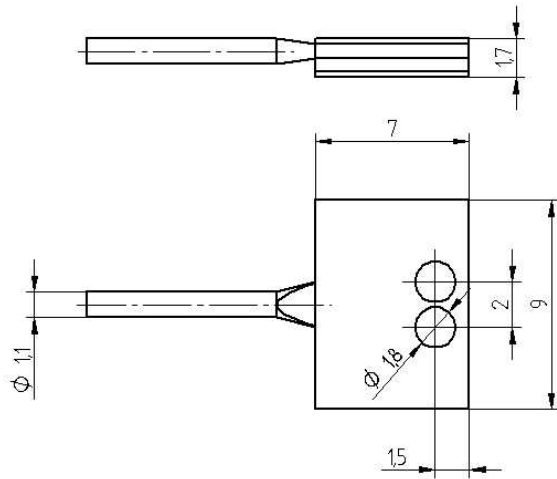
### TECHNICAL SENSOR DATA

light typ	Infrared 880nm
connection type	PUR-cable red with connectr
temperature range	-10°C...+55°C
protection class	IP67

### SENSING DISTANCE

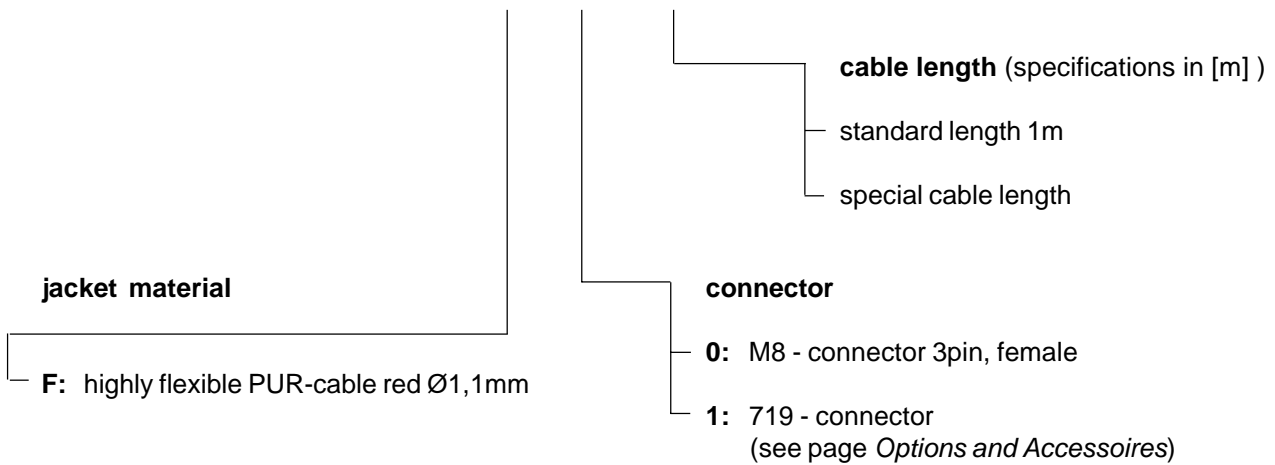
sensing distance	10 mm
------------------	-------

**DIMENSIONS**



**PART DESIGNATION**

**RLF24** -  -  :



**ORDER EXAMPLE:**

**RLF24-F-0:1m** = RLF24 - highly flexible PUR cable red - M8, 3pins, female: cable length 1m

**Please remember, for correct operation, a separate amplifier is required.**