

## RLF50RN • RLF52RN

MINI-REFLECTIVE BEAM SENSOR  
with separate amplifier

- latest LED technology
- extra narrow beam angle (small light spot)
- very high object resolution
- glass protected optics
- space saving and robust design
- easy to mount



**nano • SPOT**®  
nano • SPOT® is a new and powerful LED technology for miniaturized opto sensors

RLF50RN • RLF52RN

- 18mm x 15mm x 4,8mm
- aluminium, anodized
- for screw-on fixture



### TECHNICAL SENSOR DATA

light type	red 645nm
connection type	1m PUR cable with connector
temperature range	-10°C...+55°C
protection class	IP67

### SENSING DISTANCE

nominal sensing distance*	50mm**
nominal sensing distance on reflector R35	1000mm

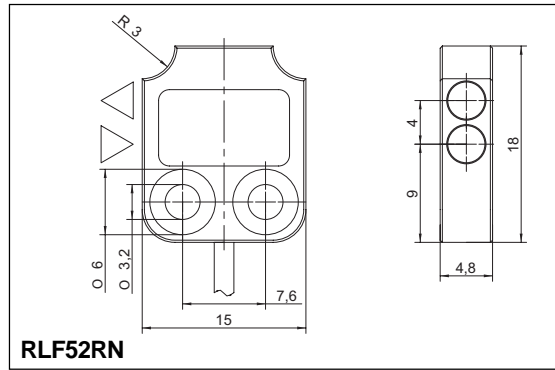
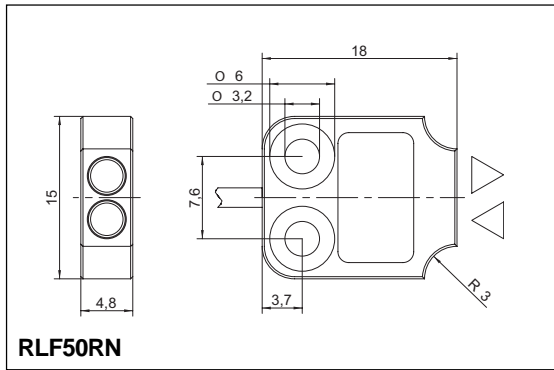
\*min. detecting distance 1mm

\*\*on white non glossy paper (90% remission, 100x100mm)

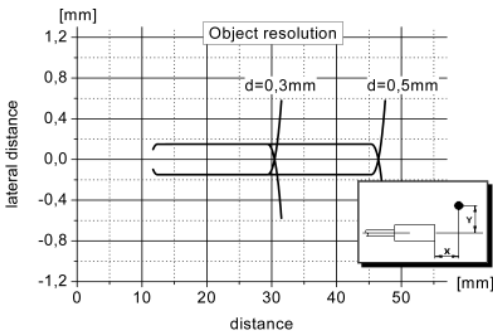
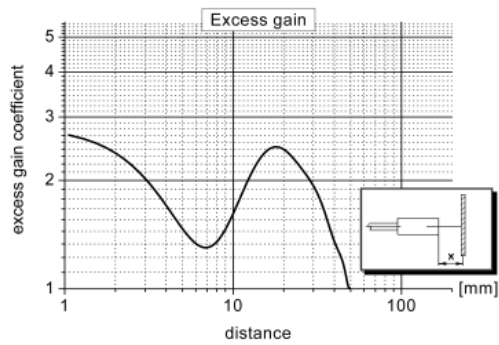
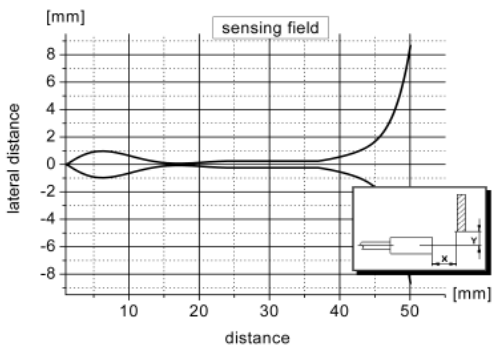


beam spot at 20mm distance

**DIMENSIONS**

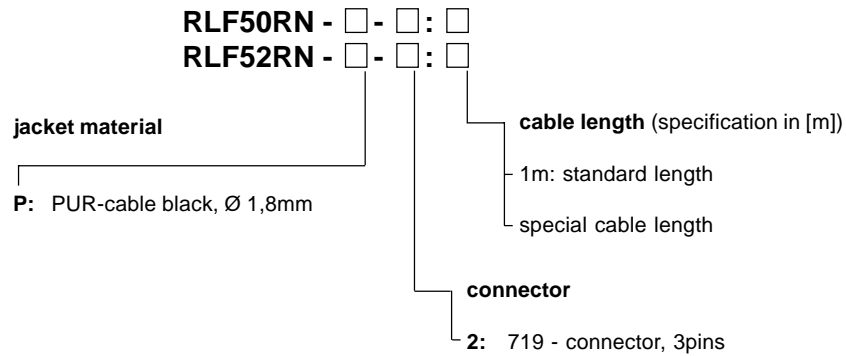


**GRAPHS** (Obtained with V9 on max. sensitivity adjustment)



(n.b.: all graphs showing typical data!)

**PART DESIGNATION**



**ORDER EXAMPLE:**

RLF50RN-P-2:1m = RLF50RN - PUR-cable black - 719-connector, 3pins: cable length 1m

Please remember, for correct operation, a separate amplifier is required.