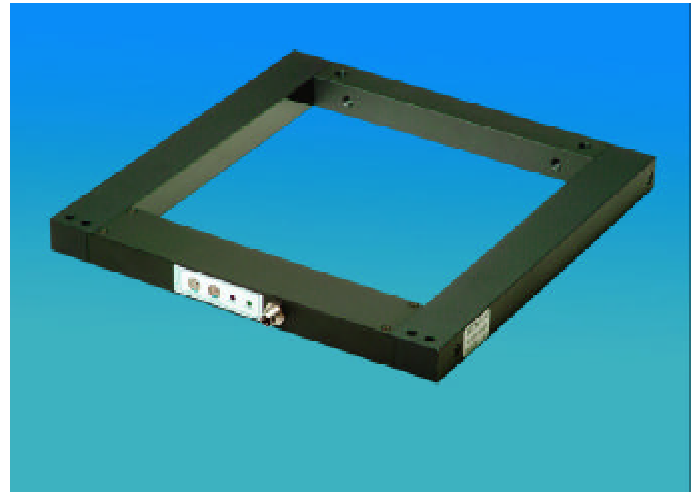


RLS160-160

STANDARD OPTICAL FRAME SENSOR

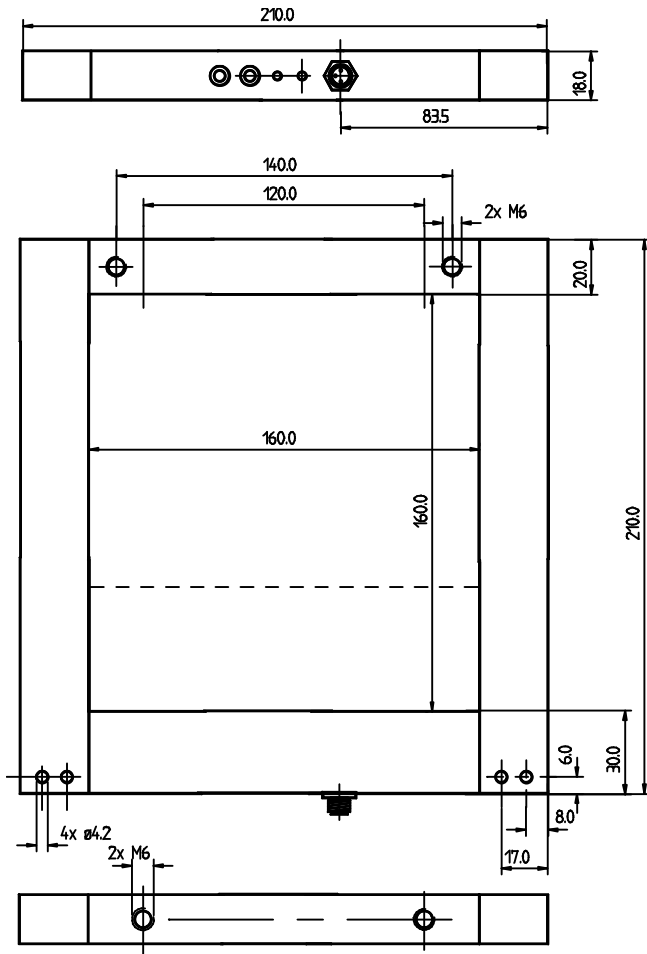
- ◉ dynamic working principle
- ◉ ideal for part ejection control
- ◉ manual adjustment
- ◉ robust design



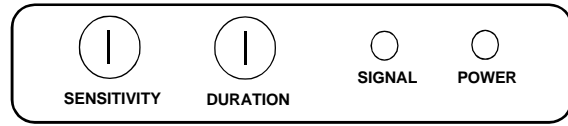
GENERAL TECHNICAL DATA

| | |
|-----------------------------------|--|
| operating voltage | 10...30 VDC, reversed polarity protection |
| current consumption | 155 mA |
| output | PNP or NPN, 200mA, short-circuit proof |
| switching function | dark-on, dynamic |
| light type | Infrared |
| operating state indicator | LED green |
| function indicator | LED red |
| switching delay | 440µsec |
| pulse stretching | 7 ms to 300 ms (adjustable) |
| temperature range | -10°C to +55°C |
| protection class | IP65 |
| opening | 160 mm (active side) x 160 mm |
| dimensions (w x d x h) | 210 mm x 210 mm x 18 mm |
| housing | aluminium, black anodized |
| resolution (smallest part) | objects \geq 4mm |
| counting frequency | function of pulse stretching (max. 140 parts /s) |
| plug | M8 locking device, 3-pins, IP65 |

DIMENSIONS



OPERATING CONTROLS

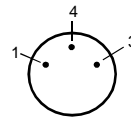
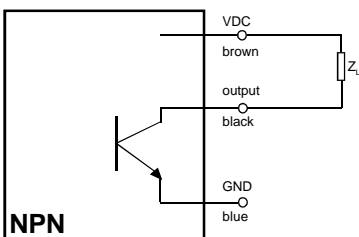
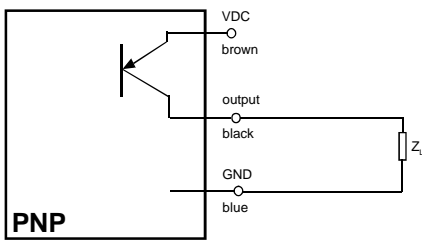


(270° - potentiometers)

- operating state (Power) LED green
- function indicator (Signal) LED red
- resolution (Sensitivity)
- impuls stretching (Duration)

CONNECTION DIAGRAM

SUPPLY AND OUTPUT



- 1 (brown) VDC
- 4 (black) output
- 3 (blue) GND

(supply cable to be ordered separately)

PART DESIGNATION

| | | | |
|------------------------|------------|---------|------------|
| RLS160-160-ADP: | non-pulsed | dark-on | PNP-output |
| RLS160-160-ADN: | non-pulsed | dark-on | NPN-output |